

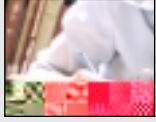
# Adelaidean

Volume 11 Number 2

News from the University of Adelaide

March 2002

## I N S I D E



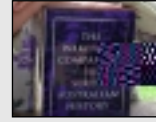
### Our Writers' Month

March 2002



### Seawater into drinking water

page 5



### A-Z of SA history

page 7



**DISTURBING** evidence is emerging that the increasingly popular drug ecstasy can be linked to users suffering long-term brain damage.

University of Adelaide researchers have found that ecstasy taken on a few occasions could cause severe damage to brain cells,

Advertisement

**Education** We specialise in meeting the special needs of teachers credit unions

Satisfac is the credit union for teachers education community, begun by South Australian teachers over 45 years

Today the majority of our directors still work in the education sector. That's why teachers have special needs, and how best to meet them. Products like our First Home Buyer Loans and Satisfac Teachers packages, special insurances, personal services and more. Our service geared to teachers' needs all point to one thing. We understand teachers. Do you think our bank does?

**Satisfac** you're welcome!

8202 7699 Satisfac Direct Credit Union Ltd. ABN 36 087 651 232. 151 South Terrace Adelaide 5000 www.satisfac.com.au A proud Federation Adelaide Education Supporter

# OBITUARY

## ONG TENG CHEONG

ONE OF the University of Adelaide's most distinguished alumni, the former president of Singapore Mr Ong Teng Cheong, died at his home in Singapore on Friday, February 8, at the age of 66.

Mr Ong, who graduated with an Honours degree in Architecture in 1962, was awarded a Distinguished Alumni Award from the University of Adelaide in 2000. The award, the highest honour given by the Alumni Association, was given "in recognition of his sustained and illustrious service to the alumni of the University of Adelaide and, auspiciously, to the people of Singapore".

Ong Teng Cheong was born in Singapore in 1936, the second of five children. At the age of 16 he met his future wife, a fellow Singaporean, 15-year-old Ling Siew May. Both eventually became students of architecture at the University of Adelaide in the late 1950s, Ong Teng Cheong as a private student and Ling Siew May as a Colombo Plan scholar. Ong Teng Cheong and Ling Siew May married in 1963, and both

returned to Singapore where they practised architecture for several years.

Mr Ong was introduced to politics in 1969 and became a Member of Parliament in Singapore in 1972. He held his seat for 21 years.

Mr Ong served in the Singapore Government as a Minister, became Secretary-General of the National Trades Union Congress and was also Deputy Prime Minister.

Mr Ong is widely credited as having made a unique contribution to his country and his people. His wife, Ling Siew May, died in Singapore in 1993.

thSitingaporn  
bonoumoer.

in

lop-dd

98(25x112x130)5140 vplz70m f12(00r)nu3(sh)14.mg

## LETTERS

### Adelaidean

**Editor**  
David Ellis

**Layout**  
Ben Osborne  
David Ellis

**Writers**  
Ben Osborne  
John Drislane  
David Ellis

**Contributors**  
Alison Beare  
Harry Medlin  
Sharna Pearce  
Lee Welch

**Printed by**  
Cadillac Color

#### Advertising

External advertising is handled by KRL Media  
Tel: +61 8 8231 5433  
Fax: +61 8 8212 1238  
Email: info.krl@katron.com.au

Room G07 Mitchell Building, South Australia, 5005.

Tel (08) 8303 5174; Fax (08) 8303 4838; Email: david.ellis@adelaide.edu.au

<http://www.adelaide.edu.au/pr/publications/Adelaidean/>

Material may be reproduced without permission but acknowledgement must be given to the *Adelaidean*.

**Jaw joint info just a click away**

A new website that provides information



# Seawater solution to Adelaide's water problems

DESALTED seawater is being touted as a potential replacement for the River Murray as Adelaide's main source of drinking water. The idea comes from University of Adelaide researchers heading a major study into the issue.

The study, funded by a 2002 ARC Linkage Grant, will be conducted over the next three years, with the results likely to have enormous implications for how and where Adelaide obtains its future drinking water.

Adelaide uses an annual average of about 180 billion litres of water each year, with about half of this coming from the River Murray.

But with the Murray increasing in salinity, water quality problems are being forecast for Adelaide due to its reliance on the river.

The University study will be jointly undertaken by two postgraduate students, Michelle Wittholz and Kylie Hyde from the departments of Chemical Engineering and Civil & Environmental Engineering, under the direction of Project Chief Investigators Dr Chris Colby and Associate Professor Brian O'Neill (Chemical), and Dr Holger Maier (Civil & Environmental).

The study will focus on how desalting (or desalination)—the process of removing salts from water—would resolve predicted water quality problems.

The options to be studied include:

- Seawater desalination along the metropolitan coastline;
- Desalting of river water as it is pumped from the River Murray or reservoirs in the Adelaide Hills;
- Desalination of reclaimed sewage from Adelaide's wastewater treatment plants;
- Desalination of groundwater.

Dr Colby said the amount of salinity in Adelaide's water supply is already a concern.

"Now a recent salinity audit by the Murray-Darling Basin Commission has found that average water salinity could exceed desirable drinking water quality by 40% of the time within the next 20 years, unless remedial action is taken," he said.

The study will set out to show that desalination could be used to augment Adelaide's water supply—reassuring both the public and industry that future water supplies should be secure no matter how much the Murray might deteriorate.

"Desalination has traditionally been regarded in Australia as an expensive technology, but desalting costs have gone down dramatically in the last decade," Dr Colby said.

"New large-scale desalting plants built overseas are now able to produce freshwater from seawater, for less than \$1 per kilolitre.

"Some of these desalting plants are built next to existing or new power plants to recycle waste heat from electricity generation.

"Desalination is already being used elsewhere in South Australia—albeit on a more-expensive, smaller scale—on Kangaroo Island, Olympic Dam and at Coober Pedy, so why not for Adelaide?"

Dr Colby said the findings of the study would also be of interest to the State's food industry, which, according to Government reports, is expected to grow from its current size of \$5.5 billion per year to \$15 billion per year by 2010.

"Such growth would be of tremendous benefit to the State, generating jobs and economic development not only in the country, but also the city," he said.

"But this would require a cheap and reliable source of water, and the River Murray is still the best place to obtain this.

Dr Maier said that this was the other goal of



the study, to see how the desalination scenarios could affect Statewide allocation of water resources from the River Murray to regional communities.

"For example, say part or all of Adelaide's

**When you're ready to retire**

work with us to

Lachlan Harvey, BEc

Glenn Todman, CFP

John Oliver, CFP

Brentan Meigel, CFP

Peter Baxendale, CFP

Boyd Lester, CFP

to our team today!

of experienced professional financial advisers  
mise your income in retirement.

Goldborough have a team who can assist you to maxi

Goldborough Financial Services are a South A  
nerated licensed dealer in securities and recon  
THE retirement specialists. Please call us at

www.goldborough.com.au



# A-Z history of South Australia first of its kind

**THE FIRST A-to-Z reference book devoted to the history of an Australian State has been compiled by an editorial team at the University of Adelaide.**

*The Wakefield Companion to South Australian History* is a one-volume guide to, and commentary on, more than 600 events, institutions, people, places and topics of significance in the history of South Australia.

Its 655 pages were compiled by Professor Wilfrid Prest (Editor) and Dr Kerrie Round (Managing Editor) from the University's Department of History, with entries written by 220 contributors from South Australia, interstate and overseas.



# Centre for indigenous studies created

A NEW Centre for Australian Indigenous Research and Studies has been established at the University of Adelaide.

Located within the Faculty of Humanities and Social Sciences, the Centre comprises two key existing indigenous units, Wilto Yerlo and the Centre for Aboriginal Studies in Music (CASM). Both units have retained their names as entities within the Centre and are staying in their current physical locations.

The Director of Wilto Yerlo, Mr Roger Thomas, has been appointed Head of the Centre for 2002. It is envisaged that an Indigenous Chair will be appointed for an initial period of five years, starting in 2003.

Mr Thomas said the new Centre would bring Indigenous research and education more fully into the University's academic life and would strengthen the current activities and services of both CASM and Wilto Yerlo. The development and delivery of a new undergraduate degree on Indigenous topics would be a priority, he said.

"The Centre's location within the Faculty of Humanities and Social Sciences makes available greater reserves of support for the two key constituent units," he said. "Wilto Yerlo will continue to provide student support and tutorial assistant services to the Faculty of Health Services and will also maintain its existing academic links with other faculties."

Mr Thomas said the Centre would monitor



Performers with the Centre for Aboriginal Studies in Music. Photo: Ben Osborne.

the University's current programs and courses dealing with Indigenous topics. It would also conduct market research to determine demand and scope for Indigenous programs, develop links to local and national industries and the arts, and strengthen connections with Indigenous community groups.

Wilto Yerlo (Sea Eagle in the Kurna language) is a teaching, research, learning, access and support centre for Aboriginal and Torres Strait Islander students, offering

foundation programs in Science, Humanities and the Social Sciences.

CASM offers a unique program for Aboriginal and Torres Strait Islander musicians, leading to the Advanced Certificate or Associate Diploma in Music.

The Centre for Australian Indigenous Research and Studies can be contacted on tel. (08) 8303 3623, fax (08) 8303 4396.

—John Drislane

## Are you an art lover?

THE University of Adelaide and the Art Gallery of South Australia have joined forces to provide a unique opportunity for graduate studies in art history.

The program combines formal University lectures with curatorial expertise, and will showcase the extensive art collections of one of Australia's premier art galleries.

A substantial component of each course will be spent in the gallery, with the artwork.

Students will gain an understanding of how to look at art from around the world, and of the goals and methods of connoisseurship.

In doing so they will have access to collections not currently available to the public.

Courses include European art, Australian art, Japanese art, Contemporary art and Australian Indigenous art, a Curatorial Placement and an Internship program.

This is an exciting program, with maximum flexibility in the choice of courses.

It leads ultimately to a full Masters degree, but students may add and combine modules to suit their personal or professional interests.

For more information contact Dr Catherine Speck: (08) 8303 5746.

### WEDNESDAY, MARCH 6

**10.10am Electrical & Electronic Engineering Seminar:** Passive Microwave Surveillance Systems, by Nigel Johnson and Chris Mandalovi (Avalon Systems). S112, Engineering South Bldg.

**12.30pm Clinical Nursing Seminar:** Care of the patient with a mental illness, by Mr Sam Goodes (Nurse Manager, IMS, RAH). Rm 36, Level 3, Eleanor Harrauld Bldg, RAH.

**1.10pm Geology & Geophysics Seminar:** Remote Sensing of Regolith and Bedrock Cover in the Olary Domain, Curnamona Providence, South Australia, by Ian Lau. Mawson Lecture Theatre.

**1.10pm Public Health Seminar:** A simplified pictorial method for mastering the math of diagnostic probability: animating the 2 + 2 table, by Dr John Lee (Department of Family Medicine, Medical School, University of California). Bice Seminar Rm, Level 6, Bice Bldg, RAH.

**4.00pm Physiology Seminar:** Did Milo Know Something the Bull Didn't? Neuromuscular Control of Large Forces, by Dr Gary Kamen (University of Massachusetts). Numico Seminar Rm, Level 5, Medical School South, Frome Rd.

**9.00pm Theatre Guild:** Late Night Shopping. Theatre off the Plaza (between Hughes Plaza and Barr Smith Library entrance). Tickets \$15/\$10 at FringeTIX 8201 4567 or from the website: [www.adelaidefringe.com.au](http://www.adelaidefringe.com.au)

### THURSDAY, MARCH 7

**1.05pm Public Lecture:** A Beautiful Mind: Nash and Mathematics, by Prof. Michael Eastwood. Rm G08, Mathematics Bldg.

**9.00pm Theatre Guild:** Late Night Shopping. Theatre off the Plaza. Tickets \$15/\$10 at FringeTIX 8201 4567 or [www.adelaidefringe.com.au](http://www.adelaidefringe.com.au)

### FRIDAY, MARCH 8

**1.10pm Elder School of Music:** Lunch Hour Concert, with Charles Bodman Rae and Stefan Ammer, works by Debussy, Ravel and Bodman Rae. Tickets \$4 at the door. Elder Hall.

**9.00pm Theatre Guild:** Late Night Shopping. Theatre off the Plaza. Tickets \$15/\$10 at FringeTIX 8201 4567 or [www.adelaidefringe.com.au](http://www.adelaidefringe.com.au)

### SATURDAY, MARCH 9

**9.00pm Theatre Guild:** Late Night Shopping. Theatre off the Plaza. Tickets \$15/\$10 at FringeTIX 8201 4567 or [www.adelaidefringe.com.au](http://www.adelaidefringe.com.au)

### SUNDAY, MARCH 10

**9.00pm Theatre Guild:** Late Night Shopping. Theatre off the Plaza. Tickets \$15/\$10 at FringeTIX 8201 4567 or [www.adelaidefringe.com.au](http://www.adelaidefringe.com.au)

## COMING EVENTS

March 2002

### MONDAY, MARCH 11

**4.00pm Public Lecture:** Talking Psychology: Featuring a Princess, a Short Skirt and the Cast of Friends, by Prof. Jonathan Potter (Loughborough University, UK and Visiting Research Fellow, Faculty of Health Sciences, Adelaide University). Hughes Lecture Theatre, Level 3 Hughes Bldg.

**9.00pm Theatre Guild:** Late Night Shopping. Theatre off the Plaza. Tickets \$15/\$10 at FringeTIX 8201 4567 or [www.adelaidefringe.com.au](http://www.adelaidefringe.com.au)

### TUESDAY, MARCH 12

**9.00pm Theatre Guild:** Late Night Shopping. Theatre off the Plaza. Tickets \$15/\$10 at FringeTIX 8201 4567 or [www.adelaidefringe.com.au](http://www.adelaidefringe.com.au)

### WEDNESDAY, MARCH 13

**10.10am Electrical & Electronic Engineering Seminar:** Automatic Target Detection & Recognition Using SAR Imagery, by Assoc. Prof. Jim Schroeder (CSSIP/ITR, UniSA). S112, Engineering South Bldg.

**1.10pm Geology & Geophysics Seminar:** Uplifts, monsoons, and their deep sea record, by Qianyu Li. Mawson Lecture Theatre.

**1.10pm Public Health Seminar:** Abortion as a consequence of prenatal screen for susceptibility for common disease--a bioethical perspective, by Ms Ellie Rosenfeld (PhD student, Public Health, Adelaide University). Bice Seminar Rm, Level 6, Bice Bldg, RAH.

**4.00pm Physiology Seminar:** Linking theory to practice - from Adelaide to Exeter, by Dr Nicky Hudson (Physiology, Adelaide University). Numico Seminar Rm, Level 5, Medical School South, Frome Rd.

**5.20pm Anatomical Sciences:** Memorial and Dedication Service for those who donated their bodies to medical science. Bonython Hall. All are welcome.

**9.00pm Theatre Guild:** Late Night Shopping. Theatre off the Plaza. Tickets \$15/\$10 at FringeTIX 8201 4567 or [www.adelaidefringe.com.au](http://www.adelaidefringe.com.au)

### THURSDAY, MARCH 14

**1.05pm Public Lecture:** A Beautiful Mind: Nash and Economics, by Dr Richard Damania. Rm G08, Mathematics Bldg.

**9.00pm Theatre Guild:** Late Night Shopping. Theatre off the Plaza. Tickets \$15/\$10 at FringeTIX

8201 4567 or [www.adelaidefringe.com.au](http://www.adelaidefringe.com.au)

### FRIDAY, MARCH 15

**1.10pm Elder School of Music:** Lunch Hour Concert, with Nicholas Milton, Michael Goldschlager and Kathryn Selby, works by Beethoven and Dvorak. Tickets \$4 at the door. Elder Hall.

**9.00pm Theatre Guild:** Late Night Shopping. Theatre off the Plaza. Tickets \$15/\$10 at FringeTIX 8201 4567 or [www.adelaidefringe.com.au](http://www.adelaidefringe.com.au)

### SATURDAY, MARCH 16

**2.00pm History of Science, Ideas & Technology Group:** Welding--History and Latest Technology, by Prof. Valerie Linton (Chair of Welded Structures, Mechanical Engineering, Adelaide University). Royal Society Rooms, Plane Tree Crt (off Kintore Ave, behind State Library Bldg).

**9.00pm Theatre Guild:** Late Night Shopping. Theatre off the Plaza. Tickets \$15/\$10 at FringeTIX 8201 4567 or [www.adelaidefringe.com.au](http://www.adelaidefringe.com.au)

### MONDAY, MARCH 18

**5.30pm CISME Seminar:** Religion and Politics in Muslim Countries, by Prof. Riaz Hassan (Flinders University). Council Room, Level 7, Wills Bldg.

### WEDNESDAY, MARCH 20

**10.10am Electrical & Electronic Engineering Seminar:** Passive Sonar Signal Processing, by Dr Daniel Solomon (DSTO). S112, Engineering South Bldg.

**12.30pm Clinical Nursing Seminar:** Using reflective processes in practice development, by Dr Ken Walsh (Practice Development Coordinator, Glenside Campus). Rm 36, Level 3, Eleanor Harrauld Bldg, RAH.

**1.10pm Geology & Geophysics Seminar:** The Curnamona Province: Critical Questions, by Lachlan Rutherford. Mawson Lecture Theatre.

**1.10pm Public Health Seminar:** Justice, fairness and children, by Dr Matt Gaughwin (Drug & Alcohol Resource Unit, RAH). Bice Seminar Rm, Level 6, Bice Bldg, RAH.

**4.00pm Physiology Seminar:** Control of unilateral and bilateral movements: Evidence from reaction time and TMS, by Dr Mike Garry (Physiology, Adelaide University). Numico Seminar Rm, Level 5, Medical School South, Frome Rd.

### FRIDAY, MARCH 22

**6.00 pm Open Forum and Dinner:** Spirit in the University, with Dr Basil Hetzel, Dr Wayne Cristaudo and Rev Dr Mark Worthing. University Staff Club, upstairs. Cost \$20. Contact Mike Pietsch <[pietsch.mike@sa.lca.org.au](mailto:pietsch.mike@sa.lca.org.au)> tel: 8303 4161 or 8378 2895.

**1.10pm Elder School of Music:** Lunch Hour Concert, with Keith Crellin and Rodney Smith, works by Bax and Hindemith. Tickets \$4 at the door. Elder Hall.

**4.00pm Obstetrics & Gynaecology Seminar:** Endothelial cell laminins: role in leukocyte extravasation, by Dr Lydia Sorokin (Nikolaus Fiebiger Center, Erlangen). Level 6, Medical School North, Frome Rd.

**6.00pm Graham Mount Oration:** Charlatans, cosmetics and commerce, or the Mount(ain) road?—which path should Continuing Education choose?, by Prof. Wyatt R. Hume (Executive VC, UCLA, newly appointed VC, UNSW). Elder Hall. Followed by dinner at the Art Gallery of SA. Cost: \$95.

### WEDNESDAY, MARCH 27

**1.10pm Geology & Geophysics Seminar:** Improved reconstruction of primary rock composition from major, trace and rare earth element composition using numerical modelling procedures, by Aaron Brown. Mawson Lecture Theatre.

**1.10pm Public Health Seminar:** Diabetic Retinopathy in the Katherine Region of the Northern Territory, by Dr Nandor Jaross (MMSc Student, Public Health, Adelaide University). Bice Seminar Rm, Level 6, Bice Bldg, RAH.

**4.00pm Physiology Seminar:** IGF-I and treatment of bowel disease, by Mr Gordon Howarth (CHRI, WCH & Physiology, Adelaide University). Numico Seminar Rm, Level 5, Medical School South, Frome Rd.

**5.30pm CISME Seminar:** Politics and Religion in Contemporary Vietnam, by Dr Ninh Xuan Tran. Council Room, Level 7, Wills Bldg.

### FRIDAY, MARCH 29

**7.30pm Music for Good Friday:** Haydn's Passion and Schubert's Mass in A flat, with the vocal talents of the School of Music. Elder Hall.

### WEDNESDAY, APRIL 3

**1.10pm Geology & Geophysics Seminar:** Gravity and seismic studies of the Eden-Burnside and Para Faults, Adelaide, by Matt Hutchens. Mawson Lecture Theatre.



# ADELAIDE FRINGE 2002 w [ (

## Adelaidean 2002 schedule

<b>publication date (Monday)</b>	<b>deadline (Thursday)</b>
APRIL April 2*	March 21
MAY April 29	April 18
JUNE June 3	May 23
JULY July 1	June 20
AUGUST August 5	July 25
SEPTEMBER September 2	August 22
OCTOBER September 30	Sept 19
NOVEMBER November 4	October 24
DECEMBER December 2	November 21

\* April 1 is a public holiday. Official publication date of the April issue is April 2 (Tuesday).

# POSTDOC PROFILE

## DR CATHIE COULTER

home loans for lifetime buyers from 5.45% pa\* Plus \$10.00 ... and no ongoing fees.

**Satisfac**  
The Teachers Credit Union  
you're welcome!

Ph: (08) 8202 76 or 1800 182 011 from country SA  
Satisfac ABN 36 087 651 232  
151 South Terrace Adelaide

\* Available to applicants who are first home buyers. Scheme terms, conditions and charges may apply and are available on request. Normal Satisfac lending criteria apply.

IT'S 70 years since the first university rugby team in South Australia pulled on its boots and packed down for the scrum.

To celebrate this milestone, the Adelaide University Rugby Union Football Club has announced its University Rugby Challenge—a \$5000 prize for the best new player to the club and a free end-of-season trip to the Gold Coast.

The challenge is open to any able-bodied person, male or female, from anywhere in the community, who joins the University Club and plays with t4-14.d.n.1(lue fof-seas6)5(3(20.ub)]TJ0 -548095 TD0 TD-0359 Tw"W)7 ll00 p644.

a  
po6w6(lgale o thtop S3444.7(y)83(.ub)]TJ0 -548095 TD-0.0102 TD-020817 Tw"tr)Thfutur(L)-2.7

# Fran reflects on a life of plane sailing

FRAN West has seen more of Australia than many of us will ever see in our lifetimes.

In 1999 Ms West became the first woman to fly a fixed-winged aircraft completely around the coast of mainland Australia. In 2000 she

## NEWSMAKERS